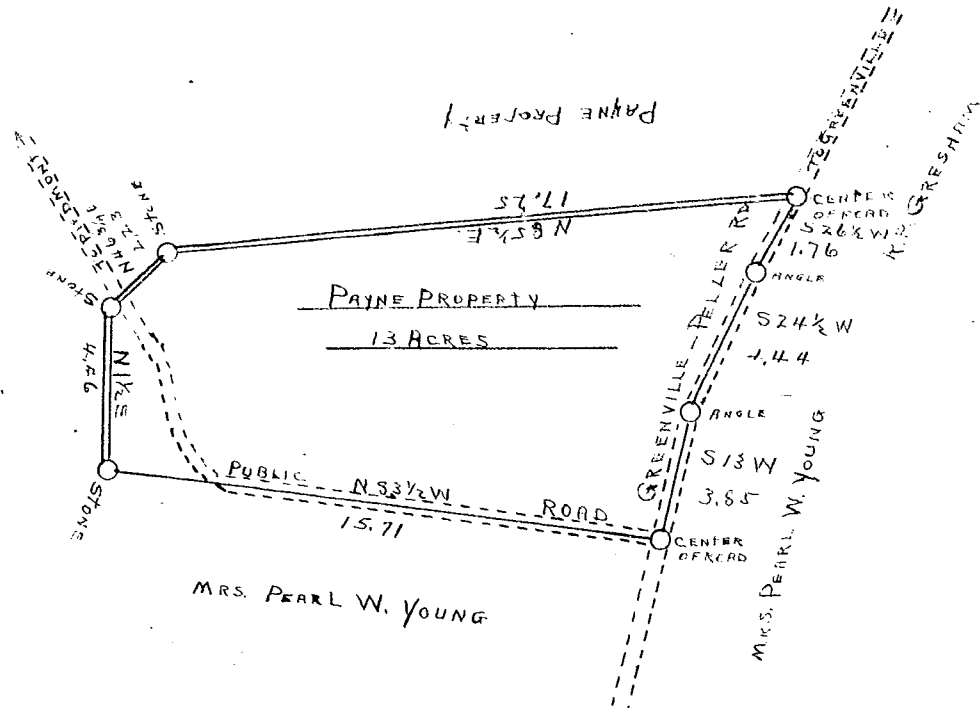


SCALE 5 CHAINS PER INCH



State of South Carolina
County of Greenville

This plat represents a certain piece, parcel or tract of land situate and being in Grove Township, State and County aforesaid, containing thirteen (13) acres, more or less.

Having such shape, marks, notes and bounds as shown.

Surveyed May, 19, A. D. 1948

W. Perkins
Surveyor

Recorded July 20th 1948 at 4:43 P. M. #15902

